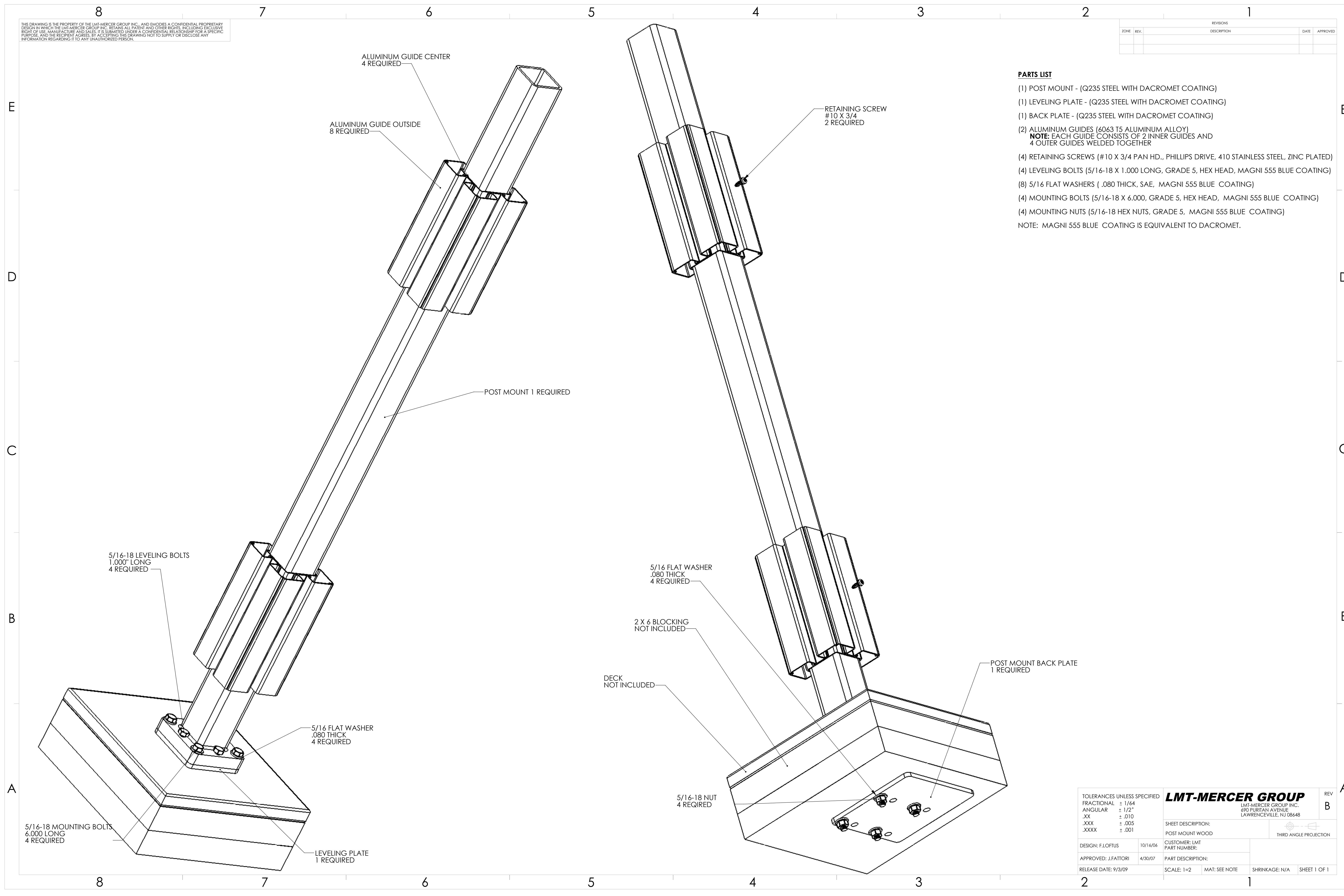


THIS DRAWING IS THE PROPERTY OF THE LMT-MERCER GROUP INC. AND EMODIES A CONFIDENTIAL PROPRIETARY DESIGN IN WHICH THE LMT-MERCER GROUP INC. RETAINS ALL PATENT AND OTHER RIGHTS, INCLUDING EXCLUSIVE RIGHT OF USE, MANUFACTURE AND SALES. IT IS SUBMITTED UNDER A CONFIDENTIAL RELATIONSHIP FOR A SPECIFIC PURPOSE, AND THE RECIPIENT AGREES BY ACCEPTING THIS DRAWING NOT TO SUPPLY OR DISCLOSE ANY INFORMATION REGARDING IT TO ANY UNAUTHORIZED PERSON.

REVISIONS		DATE	APPROVED
ZONE	REV.	DESCRIPTION	

PARTS LIST

- (1) POST MOUNT - (Q235 STEEL WITH DACROMET COATING)
 - (1) LEVELING PLATE - (Q235 STEEL WITH DACROMET COATING)
 - (1) BACK PLATE - (Q235 STEEL WITH DACROMET COATING)
 - (2) ALUMINUM GUIDES (6063 T5 ALUMINUM ALLOY)
NOTE: EACH GUIDE CONSISTS OF 2 INNER GUIDES AND 4 OUTER GUIDES WELDED TOGETHER
 - (4) RETAINING SCREWS (#10 X 3/4 PAN HD., PHILLIPS DRIVE, 410 STAINLESS STEEL, ZINC PLATED)
 - (4) LEVELING BOLTS (5/16-18 X 1.000 LONG, GRADE 5, HEX HEAD, MAGNI 555 BLUE COATING)
 - (8) 5/16 FLAT WASHERS (.080 THICK, SAE, MAGNI 555 BLUE COATING)
 - (4) MOUNTING BOLTS (5/16-18 X 6.000, GRADE 5, HEX HEAD, MAGNI 555 BLUE COATING)
 - (4) MOUNTING NUTS (5/16-18 HEX NUTS, GRADE 5, MAGNI 555 BLUE COATING)
- NOTE: MAGNI 555 BLUE COATING IS EQUIVALENT TO DACROMET.



ALUMINUM GUIDE CENTER
4 REQUIRED

ALUMINUM GUIDE OUTSIDE
8 REQUIRED

POST MOUNT 1 REQUIRED

RETAINING SCREW
#10 X 3/4
2 REQUIRED

5/16-18 LEVELING BOLTS
1.000" LONG
4 REQUIRED

5/16 FLAT WASHER
.080 THICK
4 REQUIRED

2 X 6 BLOCKING
NOT INCLUDED

DECK
NOT INCLUDED

POST MOUNT BACK PLATE
1 REQUIRED

5/16 FLAT WASHER
.080 THICK
4 REQUIRED

5/16-18 MOUNTING BOLTS
6.000 LONG
4 REQUIRED

5/16-18 NUT
4 REQUIRED

LEVELING PLATE
1 REQUIRED

TOLERANCES UNLESS SPECIFIED		LMT-MERCER GROUP LMT-MERCER GROUP INC. 690 PURITAN AVENUE LAWRENCEVILLE, NJ 08648	REV B
FRACTIONAL	± 1/64		SHEET DESCRIPTION: POST MOUNT WOOD THIRD ANGLE PROJECTION
ANGULAR	± 1/2°		
.XX	± .010		CUSTOMER: LMT
.XXX	± .005	PART NUMBER:	
.XXXX	± .001	PART DESCRIPTION:	
DESIGN: F.LOFIUS	10/16/06	SCALE: 1=2	MAT: SEE NOTE
APPROVED: J.FATTORI	4/30/07	SHRINKAGE: N/A	SHEET 1 OF 1
RELEASE DATE: 9/3/09			